

**ITO<sup>+</sup>**

SOLUTION GUIDE

# Example Production Line Implementations

ITO Corporation offers a wide range of solutions to fit customer needs, from various motors and processing machinery to systems that optimize the production line. We also assist with the implementation of energy creation systems used in energy-saving strategies.

## + Example 1

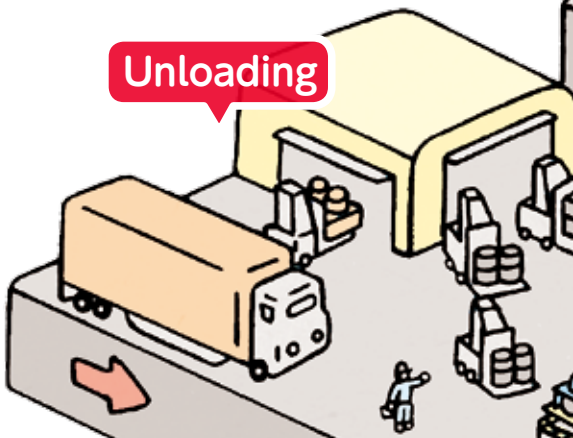


### Curved Transport

We can implement separators and curved conveyors to meet your needs.

►Details Pg. 3

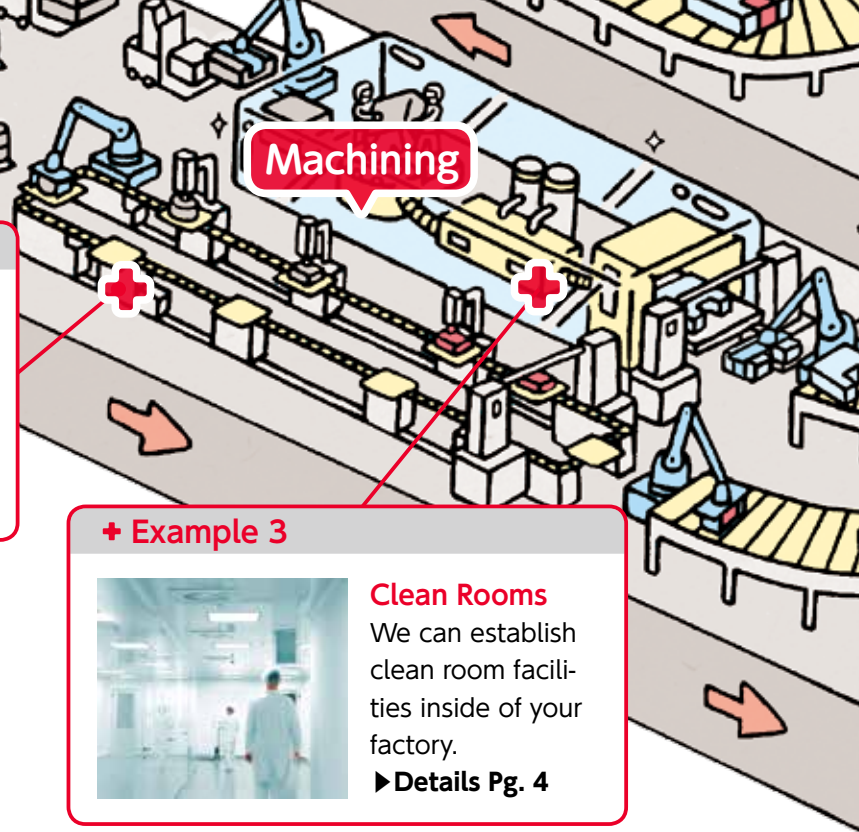
## Unloading



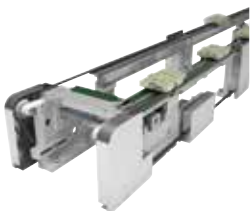
## Packing



## Machining



## + Example 2



### High-Speed Transport

We can implement high-speed transport systems that can perform precision manufacturing on the conveyor line.

►Details Pg. 3

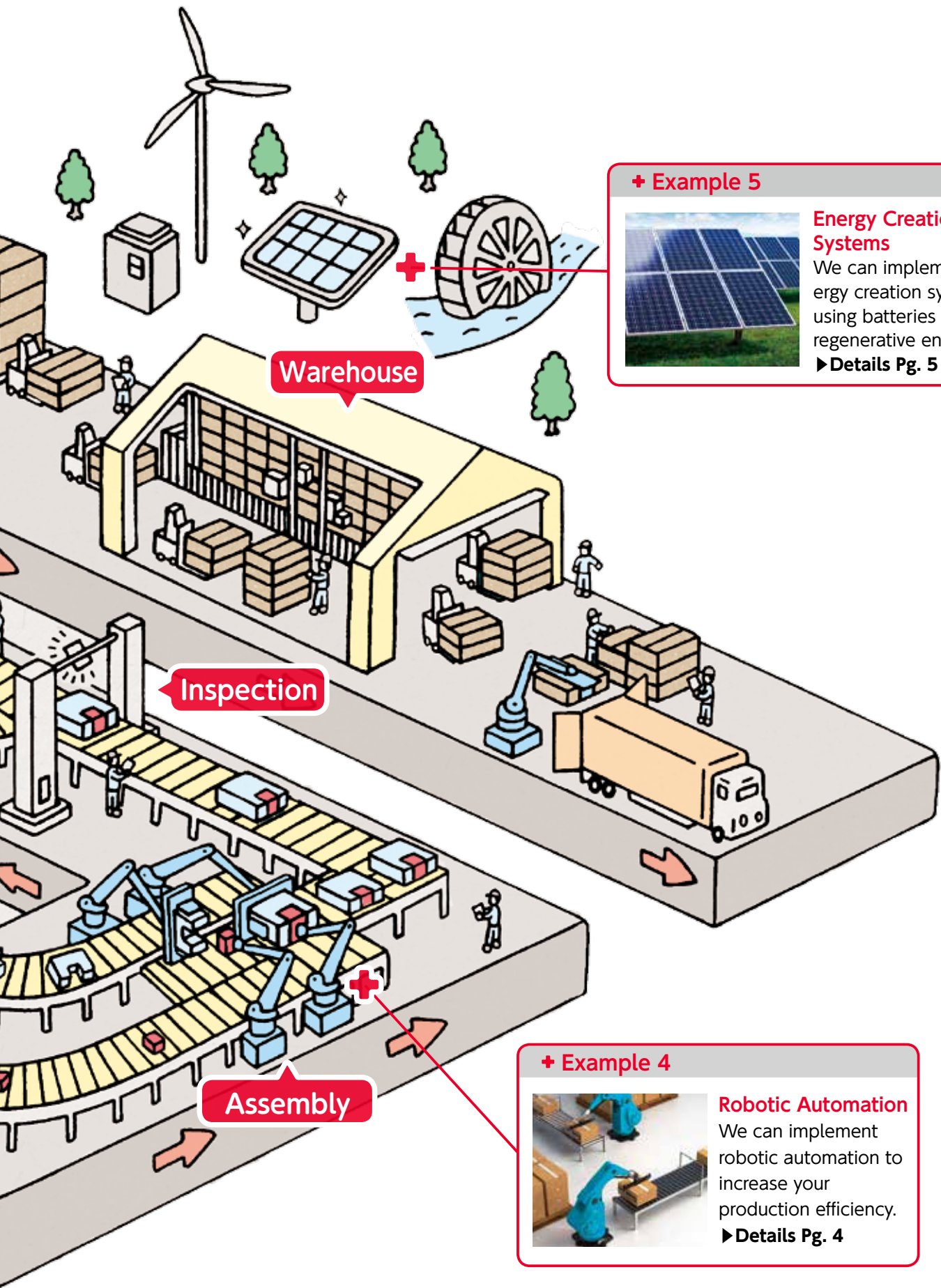
## + Example 3



### Clean Rooms

We can establish clean room facilities inside of your factory.

►Details Pg. 4



**+ Example 5**



**Energy Creation Systems**

We can implement energy creation systems using batteries and regenerative energy.

► **Details Pg. 5**

**Inspection**

**Assembly**

**+ Example 4**



**Robotic Automation**

We can implement robotic automation to increase your production efficiency.

► **Details Pg. 4**

# Example Implementations

## + Example 1: Increased Efficiency with Curved & Separation Conveyors

### Client's Needs

Automobile manufacturer looking to improve their pressing & inspection processes

1. Parts must be transported from the press to the distant inspection location
2. Space in the factory is limited so a large-scale system can't be implemented
3. The inspection process can't keep up with the high speed at which the press sends out parts

### Our Recommendation

#### Unification of the pressing & inspection processes

- Improved the layout by placing the inspection process on both sides of the press & sending parts to available inspectors with a separator conveyor
- Effectively used the factory space with curved conveyors
- Vastly improved work efficiency by doubling inspection locations, matching the high-processing speed of the press



Customer

- Using a separator and curved conveyor was an eye-opening suggestion for us
- Using the press at max capacity, we cut out wasteful processes

## + Example 2: Precision Manufacturing on the Transport Line

### Client's Needs

Precision manufacturer exploring ways to improve their manufacturing & assembly process

1. Wanted to effectively utilize the factory space by combining each process line
2. Looking to reduce production time
3. The many sensors & stoppers in the current design make maintainability difficult

### Our Recommendation

#### High-speed, high-precision conveyor line manufacturing

##### •Precision Manufacturing on the Transport Line

Stabilized manufacturing by improving position accuracy ( $\pm 0.02\text{mm}$ )

##### •High-Speed Linear Horizontal Transportation

Significant reduction in transport time. Smooth acceleration & deceleration stops with drives using servo control

##### •Improved Maintainability

Developed a clean line that doesn't need stoppers or sensors



Nittoku Engineering LITs



Customer

- We increased production and space efficiency by combining a series of lines together

Below are examples of custom machinery and facilities we have implemented for some of our customers.

## + Example 3: Clean Rooms & Washing Apparatuses

### Client's Needs

Food manufacturer urgently looking to improve their factory sanitation & safety of their food

1. Implement an environment that satisfies ISO compliance for food safety
2. Upgrade washing equipment and place the production line into clean rooms
3. Washing equipment should match the speed of the existing line
4. Ideally hoping to simultaneously reduce energy consumption

### Our Recommendation

Unified Implementation of Clean Rooms & Washing Equipment Processes

- Steps leading up to implementation:
  1. Factory inspection, design creation
  2. Discussing & settling upon the scope of construction
  3. Confirmation of construction schedule
  4. Confirmation of washing equipment functionality
  5. Installation & test run
- By implementing LED lighting, we also made reduced energy consumption possible



Customer

- ITO Corporation was the only company offering to undertake the washing equipment and clean rooms together
- They quickly and flexibly responded to each issue that arose, and we successfully cleared ISO certification

## + Example 4: Robotic Automation

### Client's Needs

Food manufacturer had given up considering robotics because they lacked knowledge

1. Shipping work was hard labor because the filled cardboard boxes were heavy
2. Wanted to entrust simple, repetitive work to robots
3. Unable to work for long hours

### Our Recommendation

Palletizing Robots

- We determined which locations needed robots or not
- We assisted with programming and teaching
- Improved the work environment by reducing heavy labor
- Improved the rate of operation by solving a shortage of manpower with robots



Customer

- ITO thoroughly inspected our manufacturing floor and proposed a compact layout for us
- Their simulation of the layout before we implemented it gave us great peace of mind

# Example Implementations

## + Example 5: Energy Creation Systems

### Client's Needs

Transportation device manufacturer searching for means of further reducing energy consumption  
Looking for ground-breaking ideas to satisfy an end user with a high awareness of energy saving techniques

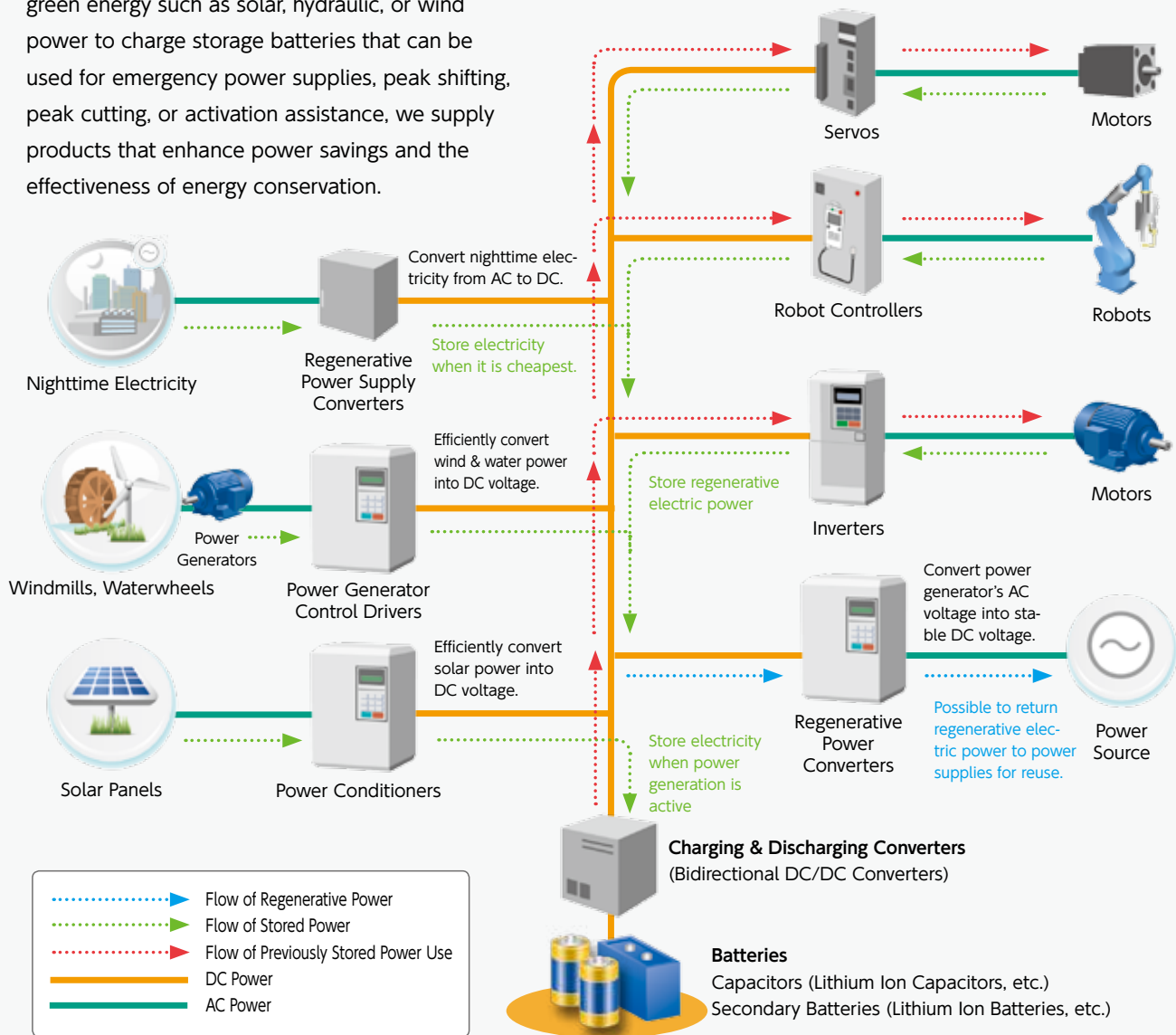
### Our Recommendation

**Utilization of regenerative energy with storage devices; realization of cost reductions via efficient energy savings**

- Adoption of a transport system that uses regenerative energy
- By using the motor energy previously thrown away as heat, regenerative energy is stored in batteries and peak power is cut

## Energy Creation Systems Overview

By using regenerative electric power sources and green energy such as solar, hydraulic, or wind power to charge storage batteries that can be used for emergency power supplies, peak shifting, peak cutting, or activation assistance, we supply products that enhance power savings and the effectiveness of energy conservation.

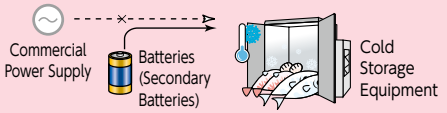


## Store & Use

### Emergency Power Source (Non-Interruptible Power Supply)

Power supply for facilities that cannot be subjected to blackouts

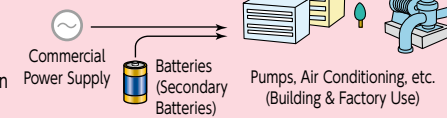
The systems provide DC power via stored battery reserves to ensure that equipment does not stop in the event of power outages.



### Peak Load Shifting & Shaving

Distribution of peak electricity consumption

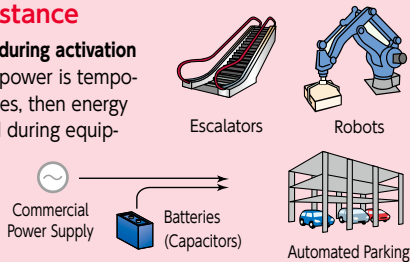
During the periods of highest energy consumption, DC energy reserves are used to equalize the electric power used and to ensure that the amount of energy consumption does not increase.



### Activation Assistance

Restricting peak load during activation

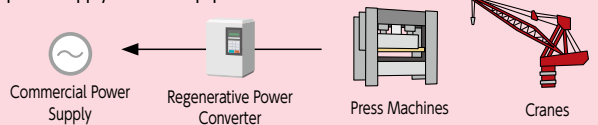
Regenerative electric power is temporarily stored in batteries, then energy assistance is supplied during equipment activation to reduce the peak energy used.



## Return & Use

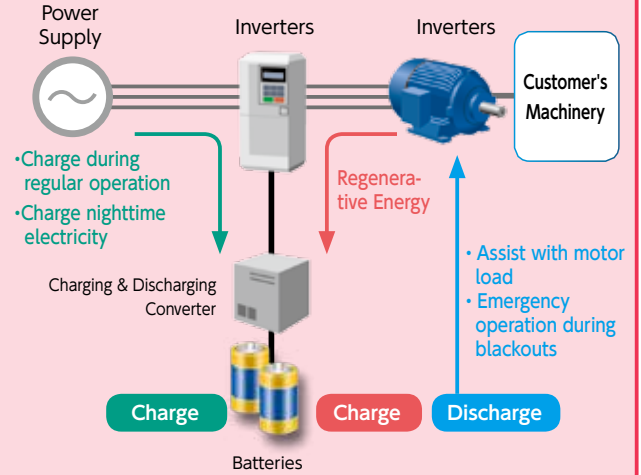
### Energy savings with regenerative electric power

Regenerative electric power returned as electricity for reuse  
Energy from battery storage and regenerative electric power sources is returned to the power supply via a regenerative energy conservation unit, which acts as a power supply to other equipment.



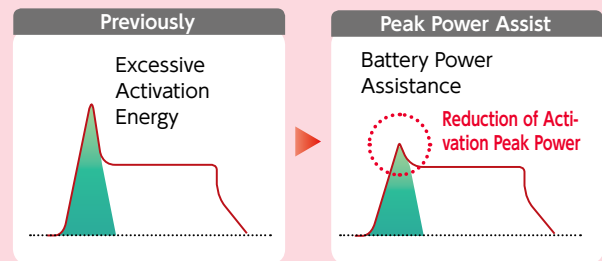
## Electric Assist 1 Regenerative Energy

Regenerative energy that was previously wasted as heat can be stored in batteries and reused.



## Electric Assist 2 Use and efficacy of accumulated power

1. You can conserve energy by providing electrical assistance during the peak electrical needs of starting motors. (If not enough regenerative power is available for the initial charging, power can be supplied using a regular power supply)



- It is easier to expand and extend your machinery while using your existing power generation capacity
- For newly designed power plants, it is possible to reduce costs and create space savings.

## Energy Creation System Components



**Solar Power Generator Power Conditioners Enewell-SOL**  
Yaskawa Electric Corporation



**Power Generator Control Inverters Enewell-GD**  
Yaskawa Electric Corporation



**Grid Connection Converters Enewell-GC**  
Yaskawa Electric Corporation



**Peak Shaving & Shifting Storage Systems YS-I-ENECOS-P**  
Yaskawa Siemens Automation & Drives Corp.



**High-Efficiency Regenerative Power Supply Converters D1000**  
Yaskawa Electric Corporation



**Lithium Ion Capacitors**  
JM Energy Corporation

# Examples by Industry 1

## Machine Tools, Press Machine, General Industry, Factory Equipment

ITO Corporation supplies motors, reduction gears, general inverters, and other equipment to customers in the product manufacturing industry including machining manufacturers, conveyor and factory equipment manufacturers, robot manufacturers, etc.

### Products We Handle



**Controllers**  
Yaskawa Electric Corporation



**Induction Motors**  
Yaskawa Electric Corporation



**Reduction Gears**  
Sumitomo Heavy Industries, Ltd.



**Electromagnetic Brakes**  
OGURA CLUTCH CO., LTD.



**Vibrators**  
Uras Techno Co., Ltd.



**Inverters**  
Yaskawa Electric Corporation



**Articulated Robots**  
Yaskawa Electric Corporation



**Various Control Panels**  
KYOWA Electric & Machinery Corp.



**Gear Couplings**  
SEISA Gear, Ltd.



**Level Indicators**  
Matsushima Measure Tech Co., Ltd.



**Hoist Cranes**  
Toyo Hoist Mfg. Co., Ltd.



### Applications & Use Environments



**Conveyor Transportation**



**Extruders**



**Mixers**



**Electric Discharge Machines**



**Palletizing Robots**



**Movable Racks**



The products handled by ITO Corporation include factory equipment, machinery, and product parts needed for customers across a wide spectrum of industries.

## Construction Machines, Specially Equipped Vehicles, Aerial Vehicles, Agriculture

We supply to manufacturers the running gears, brakes, etc. used in mobile construction cranes, as well as various hydraulic equipment that are the functional components for rotation and extension.

### Products We Handle



**Hydraulic Motors**  
Eaton Corporation plc



**Hydraulic Steering**  
Eaton Corporation plc



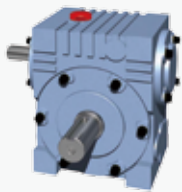
**Tilt Switches**  
The Fredericks Company



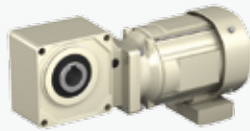
**Hydraulic Hoses**  
Eaton Corporation plc



**Cartridge Valves**  
Eaton Corporation plc



**Reduction Gears**  
Shin-ei Manufacturing Co., Ltd.



**Reduction Gears**  
Sumitomo Heavy Industries, Ltd.



**Clutches & Brakes**  
OGURA CLUTCH CO., LTD.



**Knob Displacement Correction Systems**  
Eaton Corporation plc



**Traveling Motors**  
Eaton Corporation plc

### Applications & Use Environments



**Vehicles for High-Lift Work**



**Construction Cranes**



**Railway Switches**



**Crushers**



**Construction Equipment**



**Forklift Trucks**

# Examples by Industry 2

## Elevators, Escalators, Extra-Large Doors

We supply the motors, reduction gears, brakes, etc. to the manufacturers of extra-large doors used in large facilities as well as manufacturers of the elevators & escalators used in our everyday lives.

### Products We Handle



**Reduction Gears**  
Sumitomo Heavy Industries, Ltd.



**Charging & Discharging Converters**  
Trytec Corporation



**Elevator Motors**  
Yaskawa Electric Corporation



**AC Servomotors**  
Yaskawa Electric Corporation



**Inverters**  
Yaskawa Electric Corporation



**Lithium Ion Capacitors**  
JM Energy Corporation



**Controllers**  
Yokogawa Electric Corporation



**Non-Excitation Actuated Brakes**  
OGURA CLUTCH CO., LTD.



### Applications & Use Environments



**Passenger Elevators**



**Stairlifts**



**Extra-Large Doors**



**Construction Elevators & Lifts**



**Escalators**



**Parking Systems**

## Social Infrastructure, Cranes, Floodgates

We supply the cranes, drivetrain components for water purification plant mixers, excavators for tunneling, and dam gates that are the underlying infrastructure supporting our daily lives.

### Products We Handle



**Emergency Closing Gates**  
Seibu Electric & Machinery Co., Ltd.



**Reduction Gears**  
Sumitomo Heavy Industries, Ltd.



**Trash Cranes**  
Toyo Hoist Mfg. Co., Ltd.



**Level Indicators**  
Matsushima Measure Tech Co., Ltd.



**Chain Blocks (Hoists)**  
Nitchi Co., Ltd.



**Inverters**  
Yaskawa Electric Corporation



**Hydraulic cylinders**  
Eaton Corporation plc



**Hydraulic Motors**  
Eaton Corporation plc

### Applications & Use Environments



**Floodgates**



**Shield Excavators**



**Industrial Drainage**



**Purification Plants**



**Waste Disposal Plants**

# Examples by Industry 3

## Marine Use, Harbors

We supply to shipbuilding manufacturers the capstans which hoist anchors and the thrusters and other drive mechanisms and parts used for tasks like moving the vessel horizontally during docking. We also supply the drive mechanisms and various parts for each of the various cranes used in the harbor.

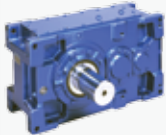
### Products We Handle



**Electromagnetic Brakes**  
OGURA CLUTCH CO., LTD.



**Hydraulic Motors**  
Eaton Corporation plc



**Reduction Gears**  
Sumitomo Heavy Industries, Ltd.



**Ship Hoists**  
Toyo Hoist Mfg. Co., Ltd.



**Valve Drive Units**  
Seibu Electric & Machinery Co., Ltd.

### Applications & Use Environments



**Winches**



**Capstans**



**Unloaders**



**Ship Cranes**



**Jib Cranes (Harbors)**



**Side Thrusters**

## Energy (Solar Power, Water Power, Thermal Power, Wind Power)

We supply to power generation equipment manufacturers a variety of converters, inverters, and power generators for use with thermal power generation and renewable energy sources like solar and mini hydro power plants.

### Products We Handle



**Induction Motors**  
YASKAWA MOTOR Co., Ltd



**Grid Connection Converters**  
Yaskawa Electric Corporation



**Power Generator Control Inverters**  
Yaskawa Electric Corporation



**Solar Power Generator Power Conditioners**  
Yaskawa Electric Corporation

### Applications & Use Environments



**Solar Power Generators**



**Power Generation Equipment**



**Small-Scale Hydroelectric Generators**



**Wind Power Generators**

## Food, Beverage, Chemical

We supply the conveyors in conveyor belt sushi, the motors and reduction gears used in bottling machine and bottle washing drive components, as well as general inverters and clean rooms.

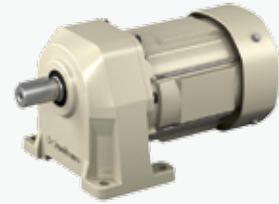
### Products We Handle



**Biomedical Robots**  
Yaskawa Electric Corporation



**Robo Cylinders**  
IAI Corporation



**Reduction Gears**  
Sumitomo Heavy Industries, Ltd.



**Inverters**  
Yaskawa Electric Corporation



**AC Servomotors**  
Yaskawa Electric Corporation



**Parallel Link Robots**  
Yaskawa Electric Corporation



**Washing Apparatuses**  
NLI ENGINEERING CO., LTD.

### Applications & Use Environments



**Clean Rooms**



**Bottling Machines, Bottle Washing Machines**



**Centrifuges**



**Kitchen Equipment**



**Sushi Conveyors**

# A Wealth of Products & Systems to Create Optimal Solutions

We offer various controllers, motors, transport equipment, and processing machinery.

Comprehensive management and control of devices using software controls



## Controls Control Sections of Machinery & Devices

### PLC



**FA-M3V**  
Yokogawa Electric Corporation

### Motion Controllers



**Machine Controllers**  
Yaskawa Electric Corporation

### Tension Controllers



**Servo Tension Devices**  
Nittoku Engineering Co., Ltd.



**Tension Controllers**  
OGURA CLUTCH CO., LTD.

### Image Processors



**Image Processing Devices**  
Yaskawa Electric Corporation

## Drive Elements Products Concerned with Drive Elements

### Inverters



**General Inverters**  
Yaskawa Electric Corporation



**Matrix Converters**  
Yaskawa Electric Corporation

### Servomotors



**AC Servomotors**  
Yaskawa Electric Corporation



**Linear Motors**  
Yaskawa Electric Corporation



**Brushless DC Motors**  
FUJII ELECTRIC WORKS Co., Ltd.

### Induction Motors



**High-Efficiency Motors**  
**EcoHIM Series**  
YASKAWA MOTOR Co., Ltd.

### Hydraulic Equipment



**Downmax Motors**  
Eaton Corporation



**Orbit Motors**  
Eaton Corporation

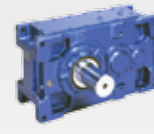


**Hydraulic Power Units**  
Daikin Industries, Ltd.

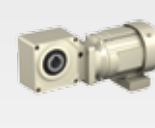
### Transmissions, Decelerators, Step-Up Gears



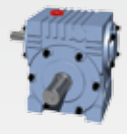
**Cyclodial Reduction Gears**  
Sumitomo Heavy Industries, Ltd.



**Paramax Reduction Gears**  
Sumitomo Heavy Industries, Ltd.



**Hyponic Reduction Gears**  
Sumitomo Heavy Industries, Ltd.



**Worm Reduction Gears**  
Shin-ei Manufacturing Co., Ltd.

## Parts Various Parts

### Measurement & Detection Devices



**Level Indicators & Switches**  
Matsushima Measure Tech Co., Ltd.



**Dust Monitors**  
Matsushima Measure Tech Co., Ltd.



**Tilt Switches**  
The Fredericks Company

### Regulators



**Damper Actuators**  
Matsushima Measure Tech Co., Ltd.



**Valve Drivers**  
Seibu Electric & Machinery Co., Ltd.

# Devices Robots, Transport Devices, Various Processing Products

## Robots



**Two Arm Robots**  
Yaskawa Electric Corporation



**Articulated Robots**  
Yaskawa Electric Corporation



**Semiconductor Wafer Handling Robots**  
Yaskawa Brooks Automation, Inc.



**Robo Cylinders**  
IAI Corporation



**Parallel Link Robots**  
Yaskawa Electric Corporation



**Electric Parts Aligning & Feeding Devices**  
Nittoku Kosei Co., Ltd.

## Laser Equipment



**YAG Pulse Laser Device**  
SpeedFam Clean System Co., Ltd.



**Fiber Lasers**  
IPG Photonics Corporation

## Transport Devices



**Hoist Cranes**  
Toyo Hoist Mfg. Co., Ltd.



**Electric Chain Blocks (Hoists)**  
Elephant Chain Block Co., Ltd.



**Electric Rotary Hooks**  
F.T. Industries Co., Ltd.



## Clean Rooms

**Clean Rooms**  
NLI ENGINEERING CO., LTD.

## Clutches & Brakes



**Various Electromagnetic Clutches & Brakes**  
OGURA CLUTCH CO., LTD.



**Disk Brakes**  
Ican Company Ltd.

## Pump Related Items



**Coolant Pumps**  
Daikin Industries, Ltd.



**Coolant Pumps E3P**  
Sumitomo Precision Products Co., Ltd.

## Transport Devices



**High-Speed & High-Precision Transport Systems**  
Nittoku Engineering Co., Ltd.



**Conveyors**  
Maruyasu Kikai Co., Ltd.



**Vertical Conveyors**  
HOKUSHO CO., LTD.

## Winding Machines



**Straight Angle Edgewise Coil Winding Machines**  
Nittoku Engineering Co., Ltd.



**CNC Multi-Spindle Winding Machines**  
Nittoku Engineering Co., Ltd.



**High Voltage Receiving Panels**  
Sanyu Electric Corporation



**Various Control Panels**  
KYOWA Electric & Machinery Corp.

## Conduction Equipment



**Gear Coupling**  
SEISA Gear, Ltd.



**Clamp Connections**  
Sumiju Business, LTD.



**Braking Resistors**  
Nishitei Co., Ltd.



**Fans**  
Royal Electric Co., Ltd.



**Hydraulic Hoses**  
Eaton Corporation



**Aluminum Containers**  
NALCOIWAI CO., LTD.



**Cable Reels**  
NIKKEN SEIGYOU KIKI K.K.

## Other Supplies

Production Line

Example Implementations

Examples by Industry

Product Lineup

International Operations

Suppliers + Clients

# International Operations

## Globalization in Asia

ITO Corporation established locally-incorporated subsidiary companies in Shanghai(2006) and Shenzhen(2017), China and Bangkok, Thailand (2014). As Asia becomes a center for globalization, we are creating close ties between China and the production

centers in each Asian locale, so that we can satisfy the needs of customers who are looking for international manufacturing options. Using information gained by our local corporations as a base, we provide robust support for clients oriented towards overseas business.

## Thailand - Hub to the Asian Markets

Asia is not only a strong base for manufacturing, Asian markets (including the ASEAN region) are also very appealing. By establishing a local corporate entity in Bangkok (the hub to the ASEAN market), we offer

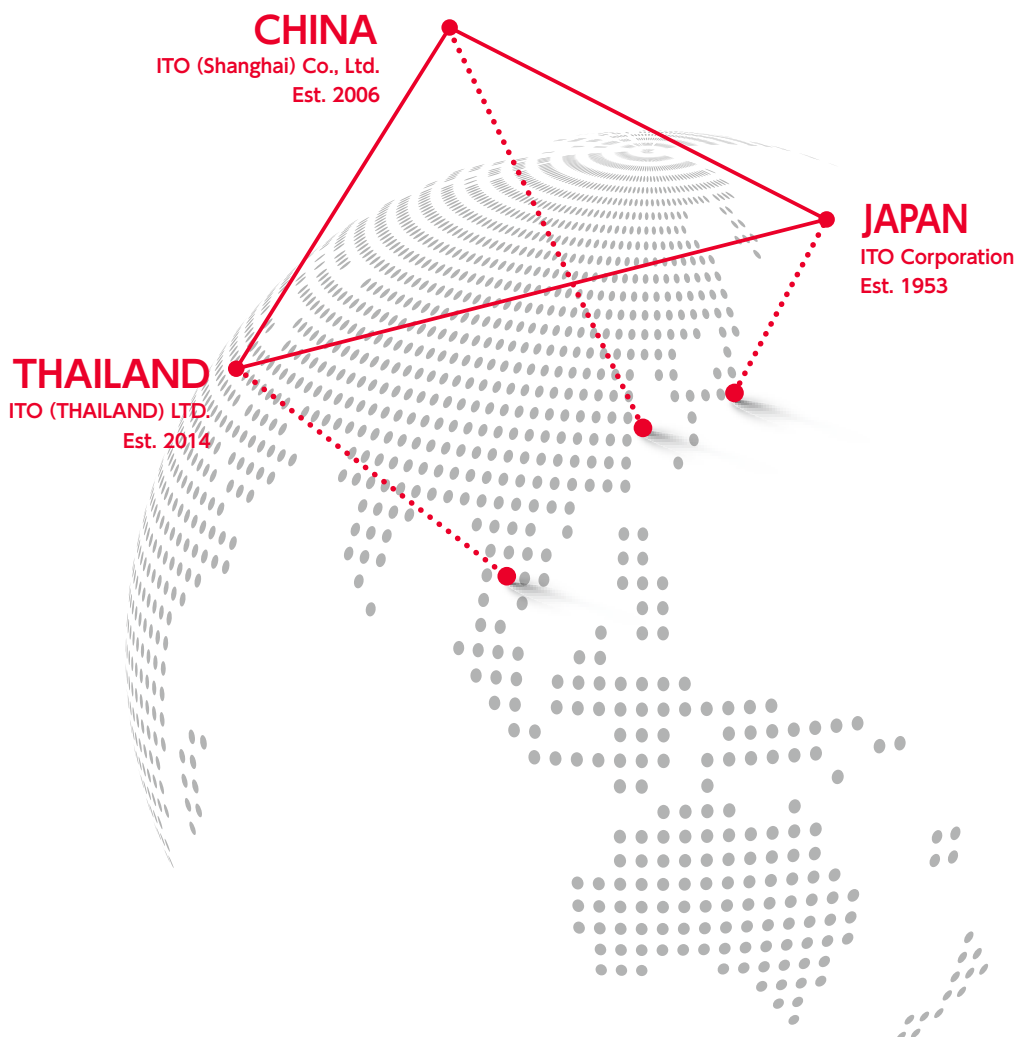
products and services to local ASEAN businesses through the ITO Network. You can rest assured that we are fully prepared to help your business expansion into Asia.



ITO (Shanghai) Co., Ltd.  
(Shanghai, China)



ITO (THAILAND) LTD.  
(Bangkok, Thailand)







We can check the local production facilities and environment through site inspections.

## Global Support for the Optimization of Cost & Quality

The low cost of overseas production is appealing, but aren't there issues with quality and delivery time frames? We can help dispel the worries of clients oriented towards overseas development by compiling the track records of local companies, by inspecting site and production facilities, by ordering samples for you, and by supporting you in balancing cost vs. quality. We also conduct credit checks on local businesses, helping to provide additional peace of mind when expanding operations abroad.



We handle global market movement by sharing locally-acquired information between our offices.

## Global Network of Information Management

We diligently monitor the production status of the local factories, and we provide goods with reliable information regarding delivery time frames. Moreover, our staff members make regular factory visits to check on production progress. In the case of a problem, we will immediately contact you with all known information and discuss alternative courses of action with you. We share the latest information between all of our branches and we provide prompt support for any market changes in each country.



Our local staff help cross the barriers of language and cultural differences.

## Communication Support via Overseas Staff

Language can be a barrier in sourcing products from abroad, but our local staff can accurately explain customer requests in Japanese, Chinese, English, Thai, and Korean. We can also assist you in finding local businesses that can manufacture your desired products.



We help you effectively enter and expand into Asian markets.

## Local Representative for our Customers

By using our company as a local foothold, we can help make your expansion into Asia possible through various forms of assistance including the sourcing of manufacturing subcontractors in China and Southeast Asia, production management, and the procurement of equipment. We also provide support for business matching opportunities in Southeast Asia.



ITO Corporation's local entities assist with finding suppliers abroad, establishing foreign markets, and managing overseas manufacturing processes.

# Suppliers

## Japan (Alphabetical Order)

C	Cosmic Industry Co., Ltd.	Electric Lifter
D	Daikin Industries, Ltd.	Hydraulic Power Units
E	Eaton Corporation	Hydraulic Equipment, Hoses, Hydraulic Power Units
	Elephant Chain Block Co., Ltd.	Chain Blocks (Hoists)
F	F.T. Industries Co., Ltd.	Hook Blocks
	FUJII ELECTRIC WORKS CO., LTD	DC Motors, Brushless Motors
H	HOKUSHO CO., LTD.	Vertical Conveyor Systems
I	IAI Corporation	Actuators, Linear Robots
	Ican Company Ltd.	Disk Brakes
	IPG Photonics Corporation	Fiber Lasers
J	JM Energy Corporation	Lithium Ion Capacitors
K	KYOWA Electric & Machinery Corp.	Panels, Circuit Board Mounting
M	Maruyasu Kikai Co., Ltd.	Conveyors
	Matsushima Measure Tech Co., Ltd.	Level Indicators & Switches, Powder Measuring Equipment
N	NALCO IWAI CO., LTD.	Aluminum Containers
	Nidec Techno Motor Corporation	Induction Motors & DC Motors
	NIKKEN SEIGYOU KIKI K.K.	Cable Reels, Slip Rings
	Nishitei Co., Ltd.	Braking Resistors
	NITCHI Co., Ltd.	Electric Chain Blocks (Hoists)
	Nittoku Engineering Co., Ltd.	Winding Machines, High-Speed Transport Systems
	Nittoku Kosei Co., Ltd.	Parts Feeders
	NLI ENGINEERING CO., LTD.	Food Clean Rooms, Washing Apparatuses
O	OGURA CLUTCH CO., LTD.	Clutches, Brakes, Tension Controllers
	OJI ELECTRIC CO., LTD.	Panel Builders
R	ROYAL ELECTRIC CO., LTD.	Air-Related Apparatuses
S	Sanyo Industry Corporation	Disk Brakes
	Sanyu Electric Corporation	Reactor Start Board Designs & Manufacturing
	Seibu Electric & Machinery Co., Ltd.	Valve Controls
	Shin Nippon Machinery Co., Ltd.	Various Pumps
	Shin-ei Manufacturing Co., Ltd.	Worm Reduction Gears
	SpeedFam Clean System Co., Ltd.	Laser Equipment
	Sumiju Business, Ltd.	Clamp Connections
	Sumitomo Electric Industries, Ltd.	Spring & Air-related Apparatuses
	Sumitomo Heavy Industries, Ltd.	Reduction Gears, Gear Motors, Inverters, Induction Motors
	Sumitomo Heavy Industries Gearbox Co., Ltd.	Step-up Gears, Large Reduction Gears
	Sumitomo Precision Products Co., Ltd.	Pump Related Items, Hydraulic Equipment
T	TAKT Co., Ltd.	Automatic Machine Designs & Manufacturing
	Toyo Hoist Mfg. Co., Ltd.	Hoist Cranes, Crab Cranes
	TRYTEC Co., Ltd.	Charging & Discharging Converters
U	URAS TECHNO CO., LTD.	Vibrators, Vibration Mills
Y	Yamashita Machinery Co., LTD.	Conveyors, Automatic Palletizers
	Yaskawa Brooks Automation, Inc.	Clean Robots, Vacuum Robots
	YASKAWA CONTROLS CO., LTD.	Control Equipment
	Yaskawa Electric Corporation	AC Servomotors, Inverters, Robots, Regenerative & Matrix Converters, Power Conditioners
	Yaskawa Electric Engineering Corporation	Repairs, Conservation, Maintenance, Renewals
	YASKAWA MOTOR Co., Ltd	PM Motors, Induction Motors
	Yaskawa Siemens Automation & Drives Corp.	Siemens Motors, Inverters, Energy Storage Systems
	Yokogawa Electric Corporation	PLC

## China

	安川电机 (中国) 有限公司	Servos, Inverters, Robots
	安川通商 (中国) 实业有限公司	MECHATROLINK Cables
	住友重机械减速机 (中国) 有限公司	Reduction Gears, Inverters
	小仓离合器 (无锡) 有限公司	Brakes, Clutches
	小仓离合器 (长兴) 有限公司	Brakes, Clutches
	上海安川电动机有限公司	PM Motors
	上海贤思机械设备有限公司	Fans
	上海齐达重型设备有限公司	Pressure Vessels, Can Manufacturing Products
	上海达宏松岛机械有限公司	Sensors
	宁波斯达弗液压传动有限公司	Hydraulic Motors
	无锡明源机械制造有限公司	Stainless Steel Piping Components
	嘉善菲特优机械制造有限公司	Sheet Metal Products
	嘉兴卓尔精密机械有限公司	Machined Components
	深圳市绿能照明有限公司	Marine LED-related Products
	广州市欧爱依光电科技有限公司	Marine LED-related Products
	无锡市锡安防爆电机有限公司	Explosion-proof Motors
	上海小松自动化设备有限公司	Control Panels
	摩肯施液压控制技术 (上海) 有限公司	VANE Pumps
	宁波市镇海液压件二厂	Hydraulic Hand Valves
	亚德客 (中国) 有限公司	Air Cylinders
	博森机床辅机有限公司	High-Pressure Coolant Equipment
	翔茆精密钣金 (嘉兴) 有限公司	Sheet Metal Products
	上海日产电线电缆有限公司	Cables, Communication Cables
	伊顿液压系统 (济宁) 有限公司	Hydraulics-related Products

## Thailand

	EATON Industries(Thailand) Ltd.	Hydraulic Equipment, Hoses, Hydraulic Power Units
	NIHON PISCO CO., LTD.	Pneumatic Equipment (Couplings, Control Valves, Tubes, Vacuum Pumps)
	SHIZCON FA CO., LTD.	Control Panels
	SM-CYCLO (THAILAND) CO., LTD.	Reduction Gears, Inverters
	YASKAWA ELECTRIC(THAILAND) CO., LTD.	Servos, Inverters, Robots

## Korea

	CHANG-SUNG PRECISION CO., LTD	Hydraulic Brakes
--	-------------------------------	------------------

## USA

	The Fredericks Company	Tilt Sensors, Switches
--	------------------------	------------------------

# Clients

## Machinery

Aichi Corporation  
Amada Co., Ltd.  
Ebara Corporation  
EBARA Environmental Plant Co., Ltd.  
FUJI Machine Mfg. Co., Ltd.  
Hitachi Construction Machinery Co., Ltd.  
Hitachi Zosen Fukui Corporation  
Hokoku Kogyo Co., Ltd.  
IHI Compressor and Machinery Co., Ltd.  
IHI Corporation  
IHI Infrastructure Systems Co., Ltd.  
IHI Machinery and Furnace Co., Ltd.  
IHI Transport Machinery Co., Ltd.  
Ikebukuro Horo Kogyo Co., Ltd.  
Japan Marine United Corporation  
Japan Steel Works, Ltd.  
JFE Engineering Corporation  
JIM Technology Corporation  
KATO HEAVY INDUSTRIES  
CONSTRUCTION MACHINERY CO., LTD.  
Kawasaki Engineering Co., Ltd.  
Kitagawa Iron Works Co., Ltd.  
Kobelco Construction Machinery Co., Ltd.  
Komatsu Ltd.  
Makino Milling Machine Co., Ltd.  
Meinan Machinery Works, Inc.  
Mitsubishi Heavy Industries, Ltd.  
Mitsubishi Materials Techno Corporation  
Nittoku Engineering Co., Ltd.  
Okuma Corporation  
Sanoyas Construction Machinery Corporation  
Sanshin Metal Working Co., Ltd.  
Shibuya Kogyo Co., Ltd.  
SUMITOMO (S.H.I.) Construction Machinery Co., Ltd.  
Sumitomo Heavy Industries Gearmotors Co., Ltd.  
Sumitomo Heavy Industries, Ltd.  
Swing Corporation  
Tsukishima Kankyo Engineering Ltd.  
Tsukishima Kikai Co., Ltd.  
Tsukishima Technology Maintenance Service Co., Ltd.  
Yamazaki Mazak Corporation

## Chemistry

FUJIFILM Corporation  
Hitachi Chemical Co., Ltd.  
J-Film Corporation  
Nippon Chemical Industrial Co., LTD.  
Nippon Kayaku Co., Ltd.  
Nissan Chemical Industries, Ltd.  
Soken Chemical Engineering Co., Ltd.  
Toray Industries, Inc.

## Food & Beverage

CALBEE, Inc.  
Kikkoman Biochemifa Company  
Kirin Brewery Company, Limited  
Kogo Starch Co., Ltd.  
Nisshin Oillio Group, Ltd.,  
Sapporo Breweries Ltd.

## Pulp & Paper

Nippon Paper Industries Co., Ltd.  
Oji Paper Co., Ltd.

## Glass

Asahi Glass Co., Ltd. (AGC)  
ISHIZUKA GLASS CO., Ltd.  
Nippon Sheet Glass Co. Ltd.  
Toyo Glass Co., Ltd.

## Construction

Shinko Plantech Co., Ltd.  
Taikisha Ltd.

## Rubber

Bridgestone Corporation  
Bridgestone Plant Engineering Co., Ltd.  
Showa-Rubber Co., Ltd.  
The Yokohama Rubber Company, Limited

## Electrical & Precision Equipment

Fuji Electric Co., Ltd.  
Futaba Corporation  
IAI Corporation  
Nidec Sankyo Corporation  
Oki Electric Industry Co., Ltd.  
Olympus Corporation  
Seiko Epson Corp.  
Toshiba Corporation  
Toshiba Elevator and Building Systems Corporation  
Toshiba Mitsubishi-Electric Industrial Systems Corporation  
Yaskawa Electric Corporation

## Transport Equipment

CENTRAL CONVEYOR COMPANY, LTD.  
Fuji Yusoki Kogyo Co., Ltd.  
HOKUSHO CO., LTD.  
Kawasaki Heavy Industries, Ltd.  
Nippon Sharyo, Ltd.  
Sekigahara Seisakusho Ltd.  
Toyota Industries Corporation

## China

青島荏原環境設備有限公司  
江陰冶金機械有限公司  
荏原機械（中國）有限公司煙台分公司  
栗田工業（蘇州）有限公司  
小倉クラッチ（長興）有限公司  
佐竹機械（蘇州）有限公司  
上海井上維他高分子製品有限公司  
上海安川電動機器有限公司  
住友重機械減速機（中國）有限公司  
綜研化學（蘇州）有限公司  
大同鏈條（常熟）有限公司  
大連小野田水泥有限公司  
通市強生輸送設備  
東芝電梯（中國）有限公司  
東芝電梯（瀋陽）有限公司  
東麗合成纖維（南通）有限公司  
長岡電子裝備（蘇州）有限公司  
日特機械工程（蘇州）有限公司  
南通閔ヶ原機械制造有限公司  
無錫愛信機械科技有限公司  
無錫市長榮輸送機械有限公司  
浙江吉成玉川機械有限公司

## Thailand

Alpha Spinning Co., Ltd.  
H&M CORPORATION CO., LTD.  
KGK Engineering (Thai) Co., Ltd.

## Vietnam

Sumitomo Heavy Industries (Vietnam) Co., Ltd.

## Korea

Syowa Sangro Corporation



**ITO Corporation**

**Contact Information**

Planning & Marketing Division

Kanematsu Bldg., 7th Fl., 2-14-1 Kyobashi, Chuo-ku, Tokyo, JAPAN 104-0031

TEL: 03-3567-0881 (Local)

TEL: +81-3-3567-0881 (International)

Email: [info@itnet.co.jp](mailto:info@itnet.co.jp)

COPYRIGHT © ITO Corporation

2017.06



ES-125

We strive for energy-efficiency,  
resource conservation, recycling,  
and new energy.